



ITC WEB INTERFACE: operating the ITC-3 Controller series

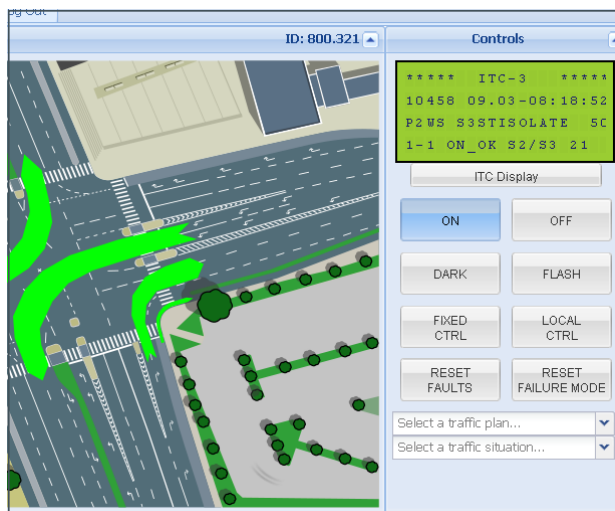
ITC WEB INTERFACE

THE WEB INTERFACE FOR ITC-3 TRAFFIC CONTROLLERS

SWARCO TECHNOLOGY is one of the leading companies worldwide in the development, production and sales of traffic and motorway controllers and communication equipment for traffic management systems. The ITC Web Interface allows authenticated users to operate the Linux-based ITC-3 Controller series through a standard web browser. Parameters can be viewed and modified providing the user with an additional powerful tool to manage intersections.

ITC WEB INTERFACE: A POWERFUL TOOL

The new ITC Web Interface brings web control of the ITC-3 Traffic Controller to your office or in the field. You can connect to the interface with a web browser. The remote control provides extended capabilities to view and modify parameters in an easy and intuitive way. These powerful tools provided by the front panel of the ITC-3 Controller are also available through the ITC Web Interface enabling flexible and better management of your intersections.



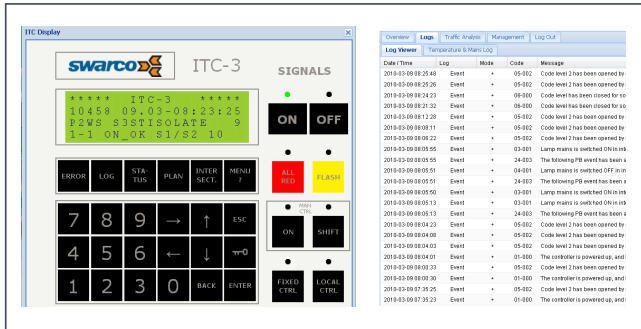
ITC WEB INTERFACE: Example showing the main menu when the ITC-3 display link is selected emulating the functions of the controller's front panel.

KEY BENEFITS

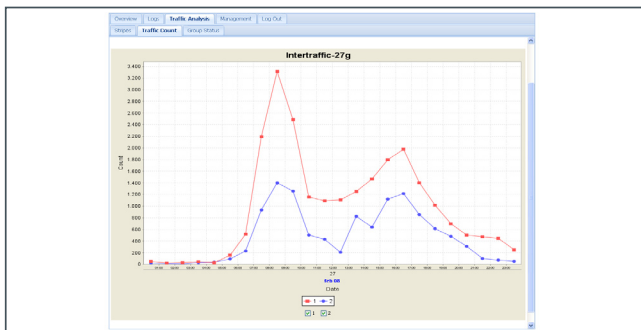
When you choose ITC-3 WEB INTERFACE, you get a reliable solution made by SWARCO. The WEB INTERFACE offers:

- An easy-to-use interface for operational and administrative tasks.
- Additional tools compared to the physical front panel of the ITC-3 traffic controller.
- Access from any location that can launch a web browser.
- Flexible and powerful security features.
- The ability to provide additional help text and view annotations in a supported national language.

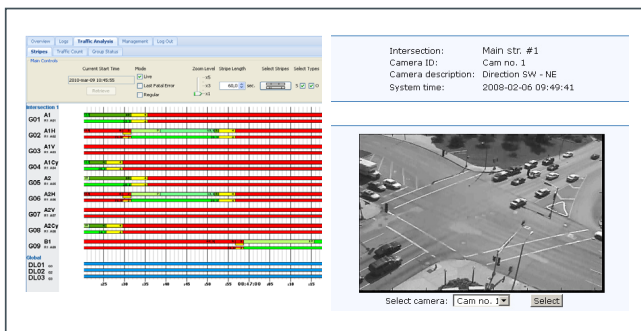
TECHNICAL DETAILS: ITC WEB INTERFACE



WEB INTERFACE: Display and log view



WEB INTERFACE: Traffic count



WEB INTERFACE: Stripes, Webcam

FEATURES OF THE ITC WEB INTERFACE

- **SYSTEM OVERVIEW** — displays the current overall status for the controller as well as information about the intersection(s) controlled. The user may change the current traffic plan, traffic situation and view the error log.
- **TRAFFIC COUNT** — provides a dialog box for defining the number of vehicle counters and the start/end of the counting interval. The results are displayed with user defined resolution.
- **STRIPES** — displays diagrams showing the colour schemes of user selectable signal groups within a specified interval.
- **ERROR-, DETECTOR-, LAMP-, EVENT-, PLAN-LOGS** — provide detailed log entries with descriptions divided in time, mode, code and a message describing the log entry.
- **WEBCAM** — displays a live image of the selected intersection.
- **ITC-3 DISPLAY** — emulates the functions of the controller's front panel.
- **ITC-3 TERMINAL** — provides a textual user interface, coupled to the programmable functions of the controller.
- **USER MANAGEMENT** — enables the creation of users and editing of their rights to specific tasks and services in the ITC-3 Web Interface.
- **SERVER MANAGEMENT** — provides server specific information and functionality to set up basic parameters of the ITC-3 Controller.
- **ITC-3 CONFIGURATION** — provides an upload feature for new ITC-PC configuration files as well as the possibility to download the current configuration.
- **MY ACCOUNT** — allows the user to edit his/her password.

REQUIREMENTS ON THE USER'S SIDE

- Supported browsers: Internet Explorer 6 or higher, Mozilla/Firefox 2.0 or higher.
- Screen resolution: 1024x768 or higher.
- The browser must have JavaScript and Cookies enabled.
- Java 5 (J2SE 5.0) or better from Sun Microsystems.

YOUR LOCAL CONTACT



SWARCO TECHNOLOGY APS

SWARCO TECHNOLOGY develops and markets traffic and motorway controllers as well as communication equipment for traffic management systems. Thousands of our products have been installed and are now in use in different applications in many countries. As a company of the SWARCO Group we can deliver complete solutions for traffic management systems.